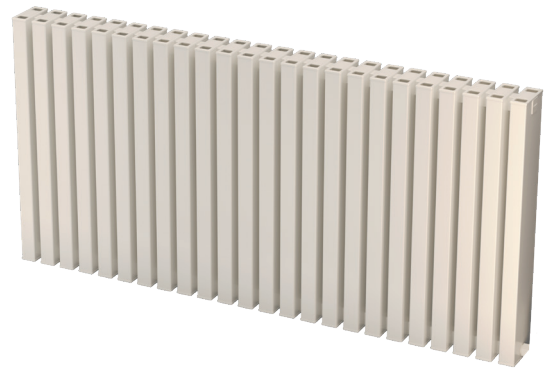


LPI Fitting Instructions

Please read these instructions and terms and conditions carefully prior to installation.
Failure to do so may invalidate the warranty.



Drawings

Fig.1

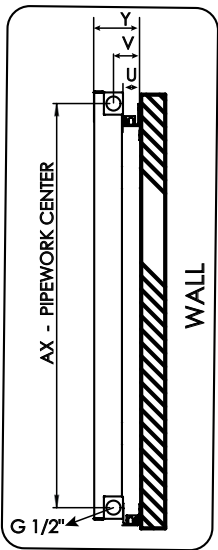
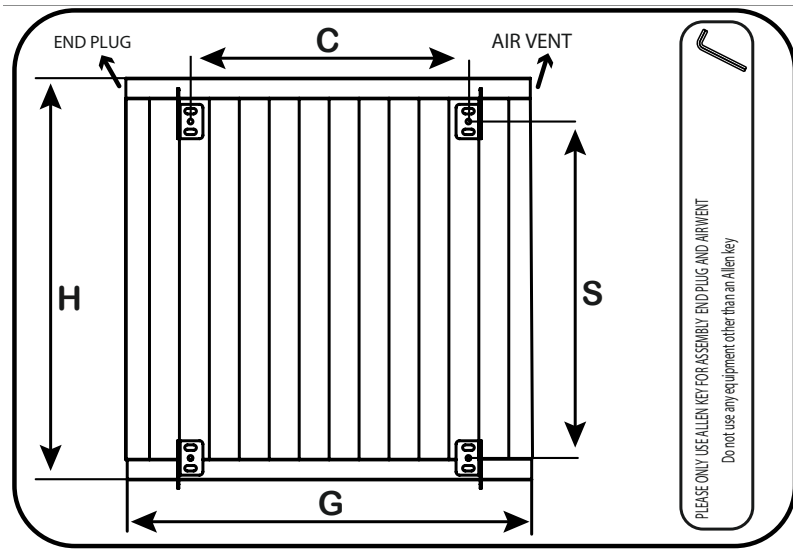


Fig. 2



TUBE QTY	G	C	U	V	Y
6	290	168	22	70	116
8	392	270	22	70	116
10	494	372	22	70	116
12	596	474	22	70	116
16	800	678	22	70	116
20	1004	882	22	70	116
24	1208	1086	22	70	116

H	S	AX
384	280	345
584	480	545
1784	1680	1745

**Note: Dimensions are in millimeters unless otherwise stated.
There is a tolerance of ± 2 mm on all dimensions.**

Pipe Centres

- Pipe centres left to right = Width plus valves
- Pipe centres from wall = 70mm
- Depth from wall = 116mm

1. Unpack & Inspect

This product should have reached you in perfect condition. Please carefully unpack and inspect this radiator and all fittings. Your point of purchase must be notified of any shortages or damage within 28 days of delivery. For further information please see terms and conditions on reverse.

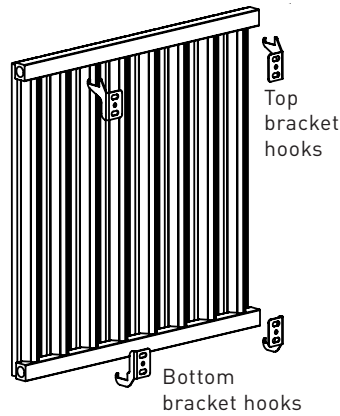
2. Contents

You should have:

- 1 Radiator
- 2 top bracket hooks
- 2 bottom bracket hooks
- Fixing Screws
- Caps for airvent & blanking plug
- 1 Airvent
- 1 Blanking plug

You will need:

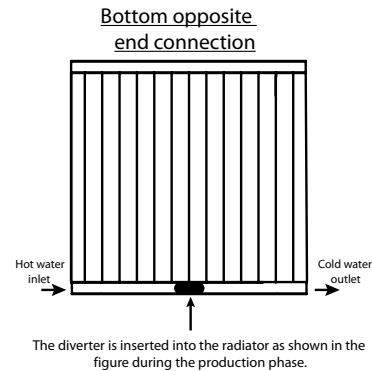
- Tape measure
- Electric drill and bits
- Spirit level
- Adjustable wrench
- Hammer
- Flat blade screwdriver
- Spanner for valves & vents



3. Installing radiator

Once brackets are level and secure hang the radiator on the brackets.

4. Diverter



3. Installing radiator

Refer to fig.2 overleaf when installing

Offer up the radiator and mark the position of the top brackets. Fixings are positioned using measurement C. Bottom bracket fixings are distance S from the top fixings., and circa 38mm up from the bottom of the radiator.

Using appropriate drill bits and wall fixings secure the brackets checking they are level.

5. Commission Radiator

Please Note: In accordance with Part L1 2006 of the Building Regulations and BS7593:1992 code of practice for the treatment of hot water and central heating systems, we strongly recommend flushing the heating system post installation of new radiators and then adding the correct quantity and type of inhibitor for use with your radiator and system to prevent corrosion. Damage caused to systems not protected by a suitable inhibitor will not be covered by manufacturer's guarantee.

Technical Specifications

Materials	Aluminium
Connections	1/2" flow and return.
Test pressure	8 Bar
Testing authority	BS EN442
Maximum operating pressure	4 Bar
Maximum working temperature	95 °C
Packaging	Plastic foam protection in cardboard box

PLEASE NOTE: To reduce the possibility of noise caused by rapid heating and cooling of aluminium radiators; adequate capacity for expansion must be provided within the overall heating system. Systems using micro bore pipework must have adequate pressure and flow rates for the number and style of radiators on the system.

Guarantees & Liabilities

This product is guaranteed for 10 years. As we are not the manufacturers of this product we will take all reasonable endeavours to make over to you the benefit of any warranty or guarantee given by the manufacturer.

The guarantees in all cases are subject to the products being installed in accordance with British and or European standards as well as these fitting instructions. The guarantees in all cases are restricted to the free of charge replacement or repair of the failed product only. Our liability will under no circumstances extend beyond the repair or replacement of the product supplied by us. Claims for either labour in replacement or damage to property are not admissible. Any goods that are returned, in the event of a problem, will belong to us.

Terms & Conditions

All products must be inspected once removed from the packaging and your point of purchase notified within 28 days of delivery of any scratches, blemishes or other damage. Your point of purchase will then agree appropriate action.

Imperfect radiators should therefore not be fitted and your point of purchase will not accept responsibility for replacement of scratched or damaged radiators once they have been fitted. This includes any consequential loss or cost of fitting.

If your point of purchase are not notified within 28 days of the date on the signed delivery note then it will be deemed that they have fully complied with their obligations and claims will not be considered.

Failure to comply with any of the above may invalidate any claims. Your point of purchase recommend that after you check the product on delivery that it is stored in its packaging to prevent damage prior to installation, they cannot accept responsibility for items damaged after delivery.