

WINSFORD Ladder Rail

- Italian design & manufacture, certified to EN442
- +Valves prices include Chrome DRAKE Valves*
- 25mm Steel Straight Cross Tubes
- White RAL 9016 as standard delivered in 48-72 hours
- Optional next day delivery available in White RAL 9016 (page 3)
- 25 RAL colours and 5 special finishes delivered in up to 15 working days (pages 74-75)

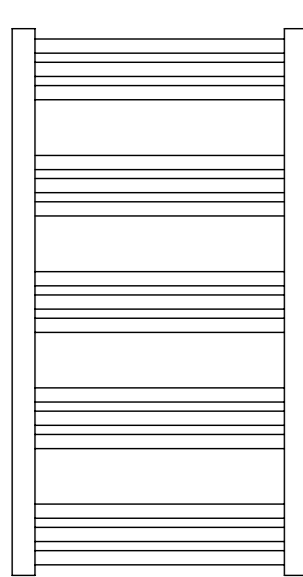


Sizes and Prices

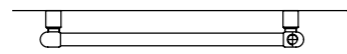
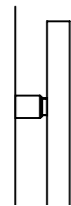
Dimensions (mm)		Cross Tubes	Output Δt 50°C		Product Code	White Ex VAT	White Inc VAT	Colour Ex VAT	Colour Inc VAT	White +Valves Ex VAT	White +Valves Inc VAT	Colour +Valves Ex VAT	Colour +Valves Inc VAT
Height	Width		Watts	Btu's									
759	500	12	370	1262	WINS755012	£61.00	£73.20	£147.00	£176.40	£83.00	£99.60	£169.00	£202.80
964	500	15	418	1426	WINS965015	£68.00	£81.60	£157.00	£188.40	£90.00	£108.00	£179.00	£214.80
1374	500	21	579	1976	WINS135021 ♦	£81.00	£97.20	£191.00	£229.20	£103.00	£123.60	£213.00	£255.60

**Valves Prices include Chrome DRAKE Valves, please specify angled or straight at time of order.

Pipe Centres and Technical Drawings



72mm - 82mm
57mm - 67mm



Pipe centres left to right = Width less 44mm
Pipe centres from wall = 57mm - 67mm
Depth from wall = 72mm - 82mm

+Valves Prices include Chrome DRAKE Valves in angled or straight.



Please specify at time of order



White RAL 9016 available for next day delivery (p.3).



Matching CHAUCER Radiators (p.42-45) shown in RAL 9007.



♦ WINSFORD Ladder Rail 1374mm x 500mm in White RAL 9016 shown with DARWIN Valves.

NEW SPECIAL FINISHES (shown left to right)

Carbon, Gun Metal Grey, Mottled Copper, Mottled Silver, Textured Matt Black, see pages 74-75 for more information.



Please note: Due to printing processes & manufacturing tolerances the colour of finished radiators may vary from the colours represented in this brochure.