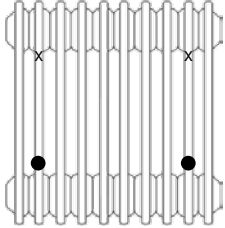


# STEEL MULTI COLUMN Fitting Instructions (Horizontal & Vertical)

Please read these instructions and terms and conditions carefully prior to installation. Failure to do so may invalidate the warranty.

## Drawings

### Bracket Positions

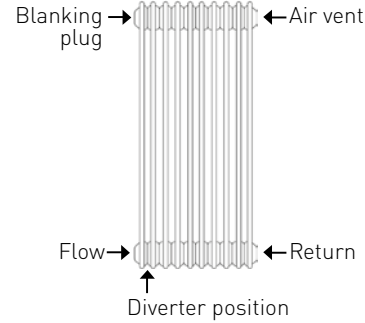


Wall Ties should be logically positioned to prevent Steel Multi Column from falling away from the wall, usually in line with Wall Brackets. If more than 2 brackets have been supplied these should be spaced evenly.

● = typical Wall Bracket positions

x = typical Wall Tie positions

### Multi Column Orientation



### Wall Ties are supplied with every order



Wall ties adjust from 32mm to 42mm

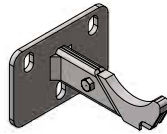
## Mounting Options

Depending on which mounting option you have chosen you will receive the correct number of brackets / feet from one of the following;

### 1 - Standard Wall Brackets

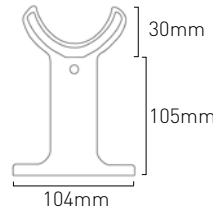


### 2 - Stud Wall Brackets



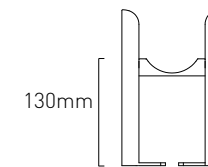
### 3 - Floor Mounts

If ordered position evenly between sections beneath the radiator.



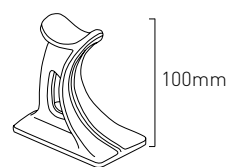
### 4 - Slip on Feet

If ordered slip on desired sections evenly beneath radiator.



### 5 - Cast Feet

If ordered position evenly between sections beneath the radiator.



## Pipe Centres

Pipe centres left to right = width of radiator plus valves

Pipe centres from wall =

Mounting Option	2 Column	3 Column	4 Column	5 Column	6 Column
Standard Wall Brackets	64mm - 74mm	82mm - 92mm	102mm - 112mm	120mm - 130mm	140mm - 150mm
Stud Wall Brackets	70mm - 80mm	95mm - 130mm	95mm - 130mm	129mm - 148mm	129mm - 148mm
Floor Mounts / Slip on Feet / Cast Feet	64mm - 74mm	82mm - 92mm	102mm - 112mm	120mm - 130mm	140mm - 150mm

## 1. Unpack & Inspect

This product should have reached you in perfect condition. Please carefully unpack & inspect this radiator & all fittings. Your point of purchase must be notified of any shortages or damage within 28 days of delivery.

## 2. Contents

### You should have:

- 1 Radiator
- 1 Diverter
- 4 Bushes
- 1 Manual Airvent
- 1 Blank Plug

### Plus your chosen mounting option:

- Standard Wall Brackets
- Stud Wall Brackets
- Floor Mounts
- Cast Feet
- Slip on feet

### You will need:

- Tape measure
- Electric drill and bits
- Spirit level
- Suitable screws and plugs

**PLEASE NOTE:** We will supply the correct number of brackets and wall ties with each order; prices for extra brackets / feet & wall ties are available on request.

## 3. Orientation and Fitting Bushes

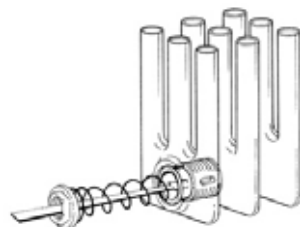
**Steel Multi Column radiators have specific left & right hand threaded bushes & these can be easily damaged if forced or incorrectly fitted (this will inevitably cause leaks).**

Your radiator has 4 open water ways, protected by plastic bungs, 3 black and one red, the top of the radiator is indicated by the red plastic bung. The bungs must be removed to allow the bushes to be fitted. Bushes require a dry fit connection only; you must not use any Compound materials (e.g. Jet Blue) or Plumbers Hemp. If you choose you may use up to 4 turns of PTFE tape to help seal the threads (the tape should be applied in the direction of the thread and no more than this amount should be used as this may cause leaks to occur). The bushes with a left hand thread are identified with a red sticker with the letter L.

If looking directly at the front of the radiator, the two bushes with an 'L' sticker on them are positioned on the left and turned anti-clockwise. The two bushes with no stickers are positioned on the right and turned clockwise. It is best to leave the sticker on the bushes until you have fitted the radiator and are ready to install the valves and air vents.

## 4. Fit Diverter

The spring diverter is necessary for all radiators over 1000mm high, it is inserted into the lower water way, the metal cap goes in first followed by the spring and is located pushed tight up against the first internal barrel nipple and held in place by a bush. The flow must enter this end first (please see diagram right).



## 5. Mark Bracket Positions

Wall brackets are typically positioned two or three sections in from either end (please see **bracket positions drawing** on the other page). The standard wall bracket is a clamp style with a separate mounting plate that is fixed to the wall. When securing the brackets to the radiator wrap masking tape around your screwdriver to reduce the risk of damaging the paint finish. Fit the wall brackets and wall ties on to the back of the radiator two sections in from each end.

**PLEASE NOTE:** It is essential that all brackets are level to ensure a vertical alignment for connecting the pipework.

## 6. Fix Wall Brackets / Feet

For standard wall brackets fix the clamp bracket and the complete wall tie to the radiator and mark their positions on the wall. Drill holes and fix the wall plates for the bracket ensuring they are all level. Hang the radiator clamp brackets onto the wall plates, then using a long screwdriver secure the wall ties to the wall. For slip on feet and floor mounts fix the wall ties in place on the top of the radiator and place the radiator in situ, mark the wall ties position, fix the wall plates, then position the radiator and secure the wall ties to the wall plates.

**PLEASE NOTE:** It is essential that all brackets are level to ensure a vertical alignment for connecting the pipework.

## 7. Hang & Commission

With all bracket positions marked and / or fixed, the radiator is placed in its final position for valve and pipe work connections. Please ensure the flow is connected to the correct end nearest the diverter (please see **multi column orientation drawing** on the other page). When commissioning your radiator on an indirect/closed system we recommend using a suitable quality & quantity of mixed metal inhibitor to protect against scale & corrosion.

**Damage caused to systems not protected by a suitable inhibitor will not be covered by manufacturer's guarantee.**

## Technical Specifications

<b>Materials</b>	Mild Steel.	<b>Maximum operating pressure</b>	8 Bar
<b>Connections</b>	½" flow & return	<b>Maximum working temperature</b>	95°C
<b>Test pressure</b>	13 Bar	<b>Packaging</b>	Wrapped in polyethylene with cardboard protectors
<b>Testing authority</b>	EN442		

**PLEASE NOTE:** Systems using micro bore pipework must have adequate pressure and flow rates for the number and style of radiators on the system.

## Guarantees & Liabilities

This product is guaranteed for 10 years. The guarantees in all cases are subject to the products being installed in accordance with British and or European standards as well as these fitting instructions. The guarantees in all cases are restricted to the free of charge replacement or repair of the failed product only. Our liability will under no circumstances extend beyond the repair or replacement of the product supplied by us. Claims for either labour in replacement or damage to property are not admissible. Any goods that are returned, in the event of a problem, will belong to us.

## Terms & Conditions

All products must be inspected once removed from the packaging and your point of purchase notified within 28 days of delivery of any scratches, blemishes or other damage. Your point of purchase will then agree appropriate action. Imperfect radiators should therefore not be fitted and your point of purchase will not accept responsibility for replacement of scratched or damaged radiators once they have been fitted. This includes any consequential loss or cost of fitting. If your point of purchase are not notified within 28 days of the date on the signed delivery note then it will be deemed that they have fully complied with their obligations and claims will not be considered.

Failure to comply with any of the above may invalidate any claims. Your point of purchase recommend that after you check the product on delivery that it is stored in its packaging to prevent damage prior to installation, they cannot accept responsibility for items damaged after delivery.