

CHAUCER Horizontal

- Italian design & manufacture
- 23mm Round Tubes in 2 heights & 3 widths in Single & Double
- Standard White RAL 9016 delivered in 48-72 hours
- 25 RAL colours, 8 special finishes, up to 15 working days (page 11)



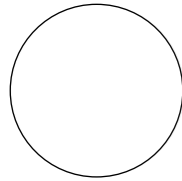
Sizes and Prices

Please add 10% to the RAL Colour price to work out your Special Finish price

Dimensions (mm)		Elements	Output Δt 50°C		Product Code	White Ex VAT	White Inc VAT	RAL Colour Ex VAT	RAL Colour Inc VAT	White +Valves Ex VAT	White +Valves Inc VAT	RAL Colour +Valves Ex VAT	RAL Colour +Valves Inc VAT
Height	Width		Watts	Btu's									
Horizontal - Single													
402	920	12	515	1757	CHAU409212SH	£175.00	£210.00	£291.00	£349.20	£238.00	£285.60	£354.00	£424.80
	1220	12	683	2330	CHAU401212SH ♦	£205.00	£246.00	£327.00	£392.40	£268.00	£321.60	£390.00	£468.00
	1520	12	851	2904	CHAU401512SH	£240.00	£288.00	£365.00	£438.00	£303.00	£363.60	£428.00	£513.60
538	920	16	681	2324	CHAU539216SH	£218.00	£261.60	£345.00	£414.00	£281.00	£337.20	£408.00	£489.60
	1220	16	903	3081	CHAU531216SH	£255.00	£306.00	£406.00	£487.20	£318.00	£381.60	£469.00	£562.80
	1520	16	1124	3835	CHAU531516SH	£280.00	£336.00	£451.00	£541.20	£343.00	£411.60	£514.00	£616.80
Horizontal - Double													
402	920	24	782	2668	CHAU409224DH	£290.00	£348.00	£424.00	£508.80	£353.00	£423.60	£487.00	£584.40
	1220	24	1037	3538	CHAU401224DH	£342.00	£410.40	£485.00	£582.00	£405.00	£486.00	£548.00	£657.60
	1520	24	1292	4408	CHAU401524DH	£414.00	£496.80	£539.00	£646.80	£477.00	£572.40	£602.00	£722.40
538	920	32	955	3258	CHAU539232DH	£375.00	£450.00	£506.00	£607.20	£438.00	£525.60	£569.00	£682.80
	1220	32	1266	4320	CHAU531232DH	£425.00	£510.00	£603.00	£723.60	£488.00	£585.60	£666.00	£799.20
	1520	32	1577	5381	CHAU531532DH	£445.00	£534.00	£631.00	£757.20	£508.00	£609.60	£694.00	£832.80

*+Valves Prices include a choice of either Chrome or White, angled KINGSTON TRV's, (if you require straight valves please specify)

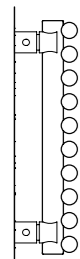
Actual tube size 23mm



Pipe Centres and Technical Drawings

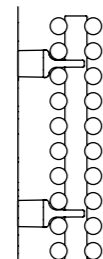
Single

90mm
55mm



Double

114-124mm
79-89mm



Pipe centres left to right = Width less 50mm
 Pipe centres from wall = single - 55mm
 = double - 79mm-89mm
 Depth from wall = single - 90mm
 = double - 114mm-124mm



+Valves Prices include Angled Chrome or White KINGSTON TRV's

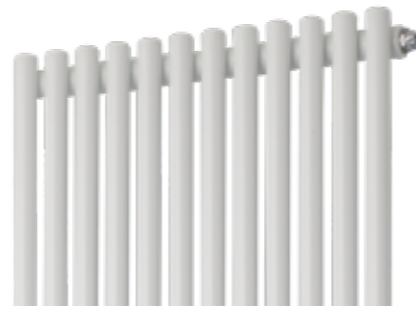


Please specify at time of order

♦ CHAUCER Single Horizontal 402mm x 1220mm shown in RAL 9004 with Chrome KINGSTON TRV's

CHAUCER Vertical

- Italian design & manufacture
- 23mm Round Tubes available in 1 height & 4 widths in Single & Double
- Standard White RAL 9016 delivered in 48-72 hours
- 25 RAL colours, 8 special finishes, up to 15 working days (page 11)



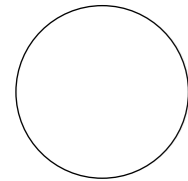
Sizes and Prices

Please add 10% to the RAL Colour price to work out your Special Finish price

Dimensions (mm)		Elements	Output Δt 50°C		Product Code	White Ex VAT	White Inc VAT	RAL Colour Ex VAT	RAL Colour Inc VAT	White +Valves Ex VAT	White +Valves Inc VAT	RAL Colour +Valves Ex VAT	RAL Colour +Valves Inc VAT
Height	Width		Watts	Btu's									
Vertical - Single													
1820	300	9	706	2409	CHAU183009SV	£243.00	£291.60	£372.00	£446.40	£306.00	£367.20	£435.00	£522.00
	402	12	941	3211	CHAU184012SV	£277.00	£332.40	£422.00	£506.40	£340.00	£408.00	£485.00	£582.00
	504	15	1176	4013	CHAU185015SV	£310.00	£372.00	£521.00	£625.20	£373.00	£447.60	£584.00	£700.80
	606	18	1411	4814	CHAU186018SV	£340.00	£408.00	£573.00	£687.60	£403.00	£483.60	£636.00	£763.20
Vertical - Double													
1820	300	18	1056	3603	CHAU183018DV	£390.00	£468.00	£532.00	£638.40	£453.00	£543.60	£595.00	£714.00
	402	24	1408	4804	CHAU184024DV ♦	£445.00	£534.00	£614.00	£736.80	£508.00	£609.60	£677.00	£812.40
	504	30	1760	6005	CHAU185030DV	£511.00	£613.20	£771.00	£925.20	£574.00	£688.80	£834.00	£1,000.80
	606	36	2111	7203	CHAU186036DV	£573.00	£687.60	£873.00	£1,047.60	£636.00	£763.20	£936.00	£1,123.20

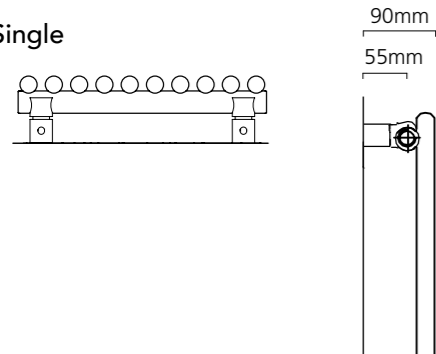
*+Valves Prices include a choice of either Chrome or White, angled KINGSTON TRV's, (if you require straight valves please specify)

Actual tube size 23mm



Pipe Centres and Technical Drawings

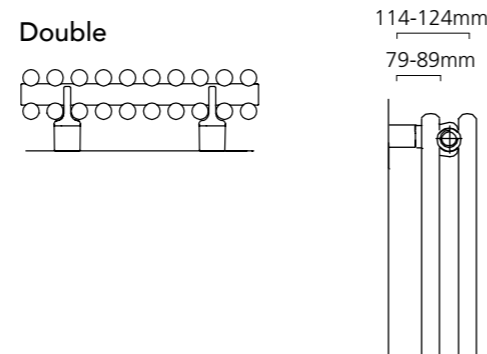
Single



Single Vertical

Pipe centres left to right = Width plus valves
 Pipe centres from wall = 55mm
 Depth from wall = 90mm

Double



Double Vertical

Pipe centres left to right = Width plus valves
 Pipe centres from wall = 79mm - 89mm
 Depth from wall = 114mm - 124mm



Horizontal (p.50-51).

+Valves Prices include Angled Chrome or White KINGSTON TRV's



Please specify at time of order



Single Vertical.



♦ CHAUCER Double Vertical RAL 7042, 1820mm x 402mm shown with KINGSTON TRV's.